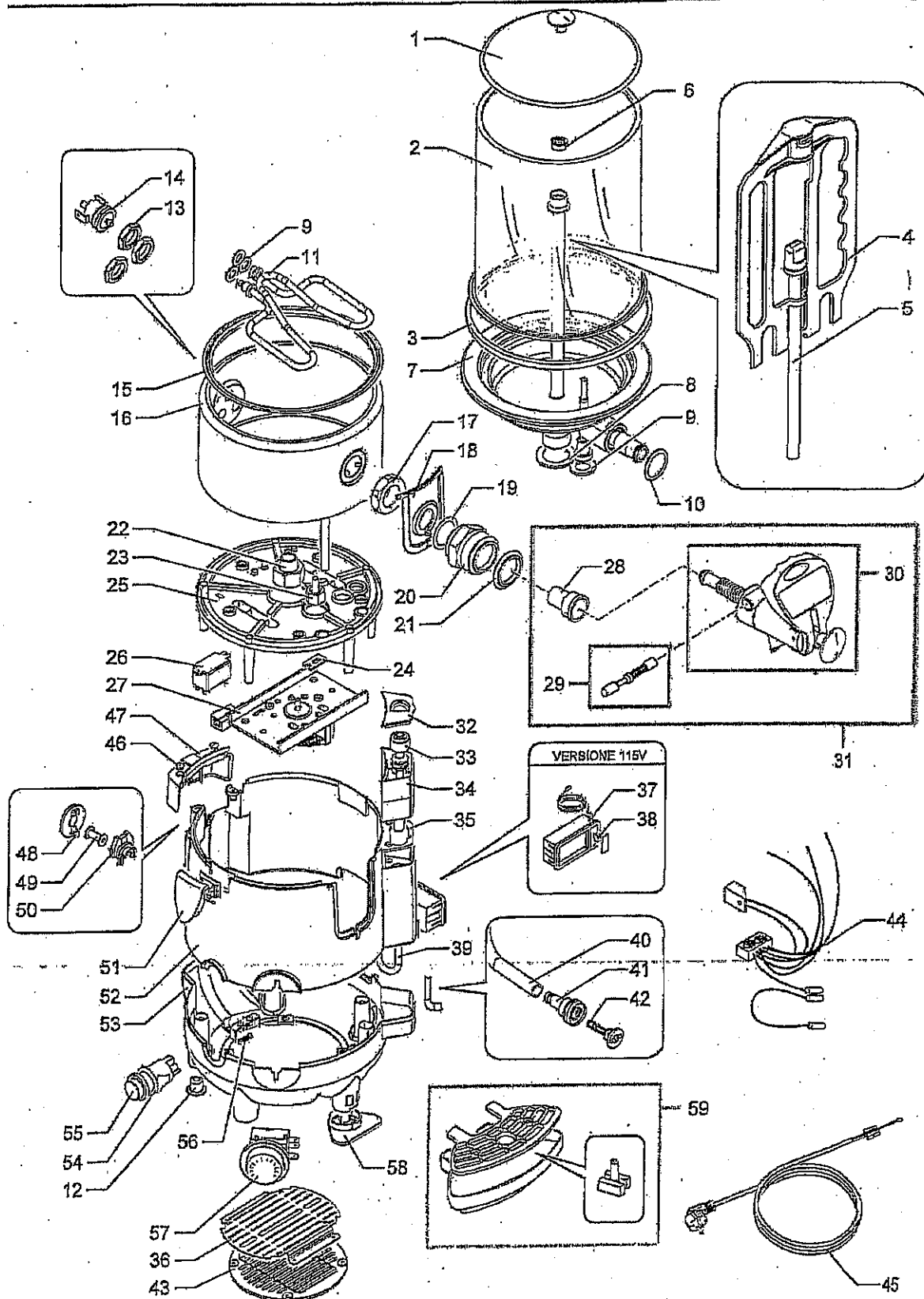


Ciocolatiera 5/10 Lt

230V - 50Hz
115V - 60Hz USA
100V - 50/60 Hz

SL320001847



SL320001847

Cioccolatiera 5/10 Lt

230V - 50Hz
115V - 60Hz
100V - 50/60 Hz

| ITEM CODE | DESCRIZIONE | DESCRIPTION | DESCRIPCIÓN | VERSION |
|-----------|--|--------------------------------|-----------------------------------|-------------|
| 1 | SL340001215 Coperchio vasca nero | Bowl cover black | Tapa cuba negra | ... |
| | SL340001365 Coperchio vasca grigio | Bowl cover grey | Tapa cuba gris | ... |
| | SL340001889 Coperchio vasca bordeaux | Bowl cover bordeaux | Tapa cuba color bordeos | ... |
| 2 | SL320002103 Vasca 5 Lt | Bowl 5 Lt | Cuba 5 Lt | 230V |
| | SL320002105 Vasca 5 Lt | Bowl 5 Lt | Cuba 5 Lt | 115V / 100V |
| | SL320002104 Vasca 10 Lt | Bowl 10 Lt | Cuba 10 Lt | 230V |
| | SL320002106 Vasca 10 Lt | Bowl 10 Lt | Cuba 10 Lt | 115V / 100V |
| 3 | SL300500139 Guarnizione vasca | Bowl gasket | Junta Cuba | ... |
| 4 | SL320001793 Agitatore 5 Lt | Stirrer 5 Lt | Agitador 5 Lt | ... |
| | SL320001792 Agitatore 10 Lt | Stirrer 10 Lt | Agitador 10 Lt | ... |
| 5 | SL320002253 Tubo agitatore 5 Lt | Stirrer tube 5 Lt | Tubo agitador 5 Lt | ... |
| | SL320002254 Tubo agitatore 10 Lt | Stirrer tube 10 Lt | Tubo agitador 10 Lt | ... |
| 6 | SL330000255 Anello tenuta | O-ring | Anillo de estanqueidad | ... |
| 7 | SL320002428 Pentola 5 Lt | Tank 5 Lt | Olla 5 Lt | ... |
| | SL320002428 Pentola 5 Lt TM (1) | Tank 5 Lt TM (1) | Olla 5 Lt TM (1) | ... |
| | SL320002430 Pentola 10 Lt | Tank 10 Lt | Olla 10 Lt | ... |
| | SL320002431 Pentola 10 Lt TM (1) | Tank 10 Lt TM (1) | Olla 10 Lt TM (1) | ... |
| 8 | SL320001822 Guarnizione 25x37x2 | Gasket 25x37x2 | Junta 25x37x2 | ... |
| 9 | SL320001823 Guarnizione 13x23x2 | Gasket 13x23x2 | Junta 13x23x2 | ... |
| 10 | SL320001821 Guarnizione 31x41x2 | Gasket 31x41x2 | Junta 31x41x2 | ... |
| 11 | SL320001855 Resistenza | Resistance | Resistencia | 230V |
| | SL320001800 Resistenza | Resistance | Resistencia | 115V / 100V |
| 12 | SL300950258 Antiscivolo | Anti-slip element | Elemento antideslizante | ... |
| 13 | SL330000263 Ghiera resistenza | Resistance ring nut | Virola resistencia | ... |
| 14 | SL390000262 Termosonda | Thermosensor | Sonda termica | ... |
| 15 | SL320001820 Guarnizione caldaia/pentola | Boiler/tank gasket | Junta caldera/olla | ... |
| 16 | SL320001854 Caldaia | Boiler | Caldera | ... |
| 17 | SL320001824 Ghiera caldaia/pentola | Boiler/tank ring nut | Virola caldera/olla | ... |
| 18 | SL320001771 Copertura rubinetto nera | Covering tap black | Cubierta grifo negra | ... |
| | SL320002047 Copertura rubinetto grigia | Covering tap grey | Cubierta grifo gris | ... |
| | SL320002727 Copertura rubinetto bordeaux | Covering tap bordeaux | Cubierta grifo color bordeos | ... |
| 19 | SL320001818 Guarnizione interna raccordo rubinetto | Tap connection internal gasket | Junta interna racor grifo | ... |
| 20 | SL320001804 Raccordo rubinetto esterno | External tap connection | Racor externo grifo | ... |
| 21 | SL320001819 Guarnizione esterna raccordo rubinetto | Tap connection external gasket | Junta esterna racor grifo | ... |
| 22 | SL320001803 Raccordo fissaggio pentola | Joint fixing tank | Racor de fijación olla | ... |
| 23 | SL320001802 Raccordo sonda termometro | Thermometer sensor connection | Racor sonda termómetro | ... |
| 24 | SL320001825 Fermo sensore termometro | Thermometer sensor stop | Retén sensor termómetro | ... |
| 25 | SL320001779 Supporto interno nero | Internal support black | Soporte interno negro | ... |
| 26 | SL330000253 Relé | Relay | Relé | 115V / 100V |
| 27 | SL3CHML740A Motoriduttore | Gear motor | Motorreductor | 230V |
| | SL3CHML740B Motoriduttore | Gear motor | Motorreductor | 115V / 100V |
| 28 | SL300002779 Guarnizione interna rubinetto | Spigot internal gasket | Junta interna grifo | ... |
| 29 | SL320002266 Parti estrazione rubinetto | Spigot extraction parts | Partes extracción grifo | ... |
| 30 | SL320002265 Parti corpo rubinetto | Spigot body parts | Partes cuerpo grifo | ... |
| 31 | SL340001213 Rubinetto nero completo | Complete tap black | Grifo negro completo | ... |
| 32 | SL320001782 Tappo vaschetta livello | Tray level cap | Tapón cubeta nivel | ... |
| 33 | SL330000254 Sensore di livello | Level sensor | Sensor de nivel | ... |
| 34 | SL320002113 Vaschetta caldaia | Boiler tray | Cubeta caldera | ... |
| | SL320002114 Vaschetta caldaia SL (1) | Boiler tray SL (1) | Cubeta caldera SL (1) | ... |
| 35 | SL320001817 Guarnizione vaschetta livello | Level tray gasket | Junta cubeta nivel | ... |
| 36 | SL320001994 Griglia interna | Internal grid | Rejilla interna | 115V |
| 37 | SL330000251 Termometro LCD nero | LCD thermometer black | Termómetro LCD negro | 115V |
| 38 | SL330000212 Batteria termometro LCD | LCD thermometer battery | Batería termómetro LCD | 115V |
| 39 | SL320001853 Tubo silicone carico caldaia | Boiler silicon inlet pipe | Tubo de silicona carga caldera | ... |
| 40 | SL320001852 Tubo silicone scarico caldaia | Boiler silicon outlet pipe | Tubo de silicona descarga caldera | ... |

Rev.07 del 11-2011

SL320001847

Ciocolatiera 5/10 Lt

230V - 50Hz
115V - 60Hz
100V - 50/60 Hz

| | | | | | |
|----|---------------|--------------------------------|------------------------------|----------------------------------|-------------|
| 41 | SL320001778 | Raccordo scarico caldaia | Boiler outlet connection | Racor descarga caldera | ... |
| 42 | SL320002107 | Perno scarico caldaia | Boiler outlet pin | Perno descarga caldera | ... |
| 43 | SL320001769 | Griglia inferiore nera | Lower grid black | Rejilla inferior negra | ... |
| | SL320002055 | Griglia inferiore grigia | Lower grid grey | Rejilla inferior gris | ... |
| 44 | SL320001842 | Cablaggio elettrico | Electric wiring | Cableado eléctrico | 230V |
| | SL320001843 | Cablaggio elettrico | Electric wiring | Cableado eléctrico | 115V / 100V |
| 45 | SL320001844 | Cavo con spina Schuko | Power cable with Schuko plug | Cable con clavija Schuko | 230V |
| | SL320001845 | Cavo con spina USA | Power cable with USA plug | Cable con clavija USA | 115V / 100V |
| 46 | SL3200024017G | Tappo copertura posteriore | Rear covering bung | Tapón cubierta trasera | ... |
| 47 | SL320001770 | Copertura posteriore nero | Black rear covering | Cubierta trasera negra | ... |
| | SL320002054 | Copertura posteriore grigia | Grey rear covering | Cubierta trasera gris | ... |
| | SL320002732 | Copertura posteriore bordeaux | Rear covering bordeaux | Cubierta trasera color bordeos | ... |
| 48 | SL320001781 | Tappo pulsante termosonda | Thermosensor button bung | Tapón botón sonda de temperatura | ... |
| 49 | SL320001777 | Pulsante termosonda | Thermosensor button | Botón sonda de temperatura | ... |
| 50 | SL320001774 | Perno pulsante termosonda | Thermosensor button stop | Retén botón sonda de temperatura | ... |
| 51 | SL340001207 | Maniglia completa nera | Complete handle black | Manilla completa negra | ... |
| 52 | SL320001795 | Corpo superiore nero | Black upper body | Cuerpo superior negro | ... |
| | SL320002051 | Corpo superiore grigio | Grey upper body | Cuerpo superior gris | ... |
| | SL320002730 | Corpo superiore bordeaux | Upper body bordeaux | Cuerpo superior color bordeos | ... |
| | SL320002110 | Corpo superiore nero TM (1) | Black upper body TM (1) | Cuerpo superior negro TM (1) | ... |
| | SL320002111 | Corpo superiore grigio TM (1) | Grey upper body TM (1) | Cuerpo superior gris TM (1) | ... |
| 53 | SL320001794 | Corpo inferiore nero | Black lower body | Cuerpo inferior negro | ... |
| | SL320002050 | Corpo inferiore grigio | Grey lower body | Cuerpo inferior gris | ... |
| | SL320002726 | Corpo inferiore bordeaux | Lower body bordeaux | Cuerpo inferior color bordeos | ... |
| | SL320001772 | Corpo inferiore nero TM (1) | Black lower body TM (1) | Cuerpo inferior negro TM (1) | ... |
| | SL320002048 | Corpo inferiore grigio TM (1) | Grey lower body TM (1) | Cuerpo inferior gris TM (1) | ... |
| 54 | SL330000280 | Interruttore | Switch | Interruptor | ... |
| 55 | SL330000259 | Protezione interruttore | Switch protection | Protección interruptor | ... |
| 56 | SL330000258 | Bloccacavo | Cable retainer | Sujetacable | ... |
| 57 | SL3CHML735A | Termostato °C | Thermostat °C | Termostato °C | 230V / 100V |
| | SL340001356 | Termostato °F | Thermostat °F | Termostato °F | 115V |
| 58 | SL320001786 | Piade anteriore nero | Front foot black | Pala delantera negra | ... |
| | SL320002052 | Piade anteriore grigio | Front foot grey | Pala delantera gris | ... |
| | SL320002731 | Piade anteriore bordeaux | Front foot bordeaux | Pala delantera color bordeos | ... |
| 59 | SL340001214 | Vaschetta con griglia nera | Tray with black grid | Cubeta con rejilla negra | ... |
| | SL340001365 | Vaschetta con griglia grigia | Tray with grey grid | Cubeta con rejilla gris | ... |
| | SL340001688 | Vaschetta con griglia bordeaux | Tray with grid bordeaux | Cubeta con rejilla color bordeos | ... |

Rev.07 del 11-2011